

MU-2 TORQUE KNEE

INSTALLATION PROCEDURES

DOCUMENT 012008

DATE: JANUARY 20/2001

PLEASE READ INSRUCTIONS
COMPLETELY
BEFORE PROCEEDING
WITH INSTALLATION

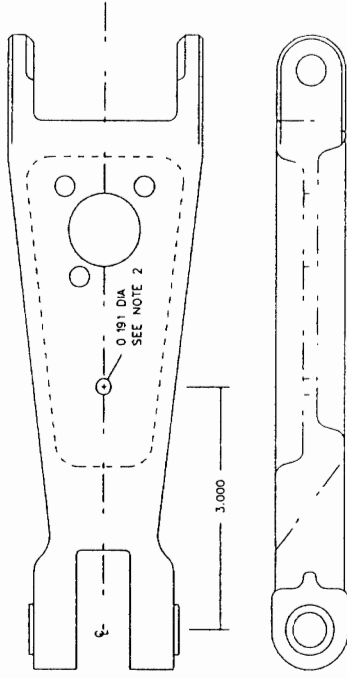
The logo for InSight Instrument Corp. features the word "InSight" in a stylized, bold, black font. The letters are composed of horizontal bars of varying lengths, creating a blocky, industrial appearance. The "I" and "S" are particularly prominent. Below the word "InSight" is the text "Instrument Corp." in a smaller, standard sans-serif font.

Box 122
Fort Erie
Ontario
L2A 6M6

Installation Procedure

- 1) Check that all parts are available.
 - a) 1 nylon lock nut p/n TK- 100
 - b) 1 flat 10-32 washer p/n TK-101
 - c) 1 spring p/n TK- 102
 - d) 1 steel eyebolt TK- 103
 - e) 2 stainless steel set screw p/n TK- 104
 - f) 1 stainless steel bail p/n TK- 105
 - g) 1 aluminum pin p/n TK-106
 - h) 1 Loctite 262 thread locker or equivalent, (not supplied)
 - i) 1 Corrosion inhibitor BRAYCOAT MIL-C-161 73 or equivalent, (not supplied)
- 2) Remove torque link from front OLEO, as per Mitsubishi procedures
- 3) Remove the 4 escutcheon pins and the label from the torque link..
- 4) Referring to drawing, 012005, center punch drill, and deburr a .191 diameter hole in the center web of the torque link as shown.
- 5) Install spring through eyebolt as shown in drawing 012001. Coat eyebolt shank with corrosion inhibitor and insert it through the previously drilled hole in the Torque Link.
- 6) Coat flat washer with corrosion inhibitor, and assemble washer and nylon locking nut as shown in drawing 012001. Tighten nut to 10-in/lbs.
- 7) Install Torque Link to front Oleo as per Mitsubishi procedures.
- 8) Apply one drop of Loctite thread locker, to each of the two (2) stainless steel set screws. Insert one set screw, loosely into each end of the pin. Coat the pin, p/n TK- 106, with corrosion inhibitor, and slip it through the upper mounting boss on the airframe. (refer to drawing 012001).
- 9) Coat the ends of the Stainless steel bail with corrosion inhibitor; (refer to drawing 012001).
- 10) Slip the end of the spring over the Stainless steel bail.
- 11) Insert the ends of the wire bail into the pin until fully seated.
- 12) Tighten both stainless steel set screws. Torque to 10 in/lbs.
- 12) Check for free operation & no conflicts. Correct if any.and recheck.

| REVISIONS | | |
|-----------|-------------|------|
| REV | DESCRIPTION | DATE |
| | | |
| | | |

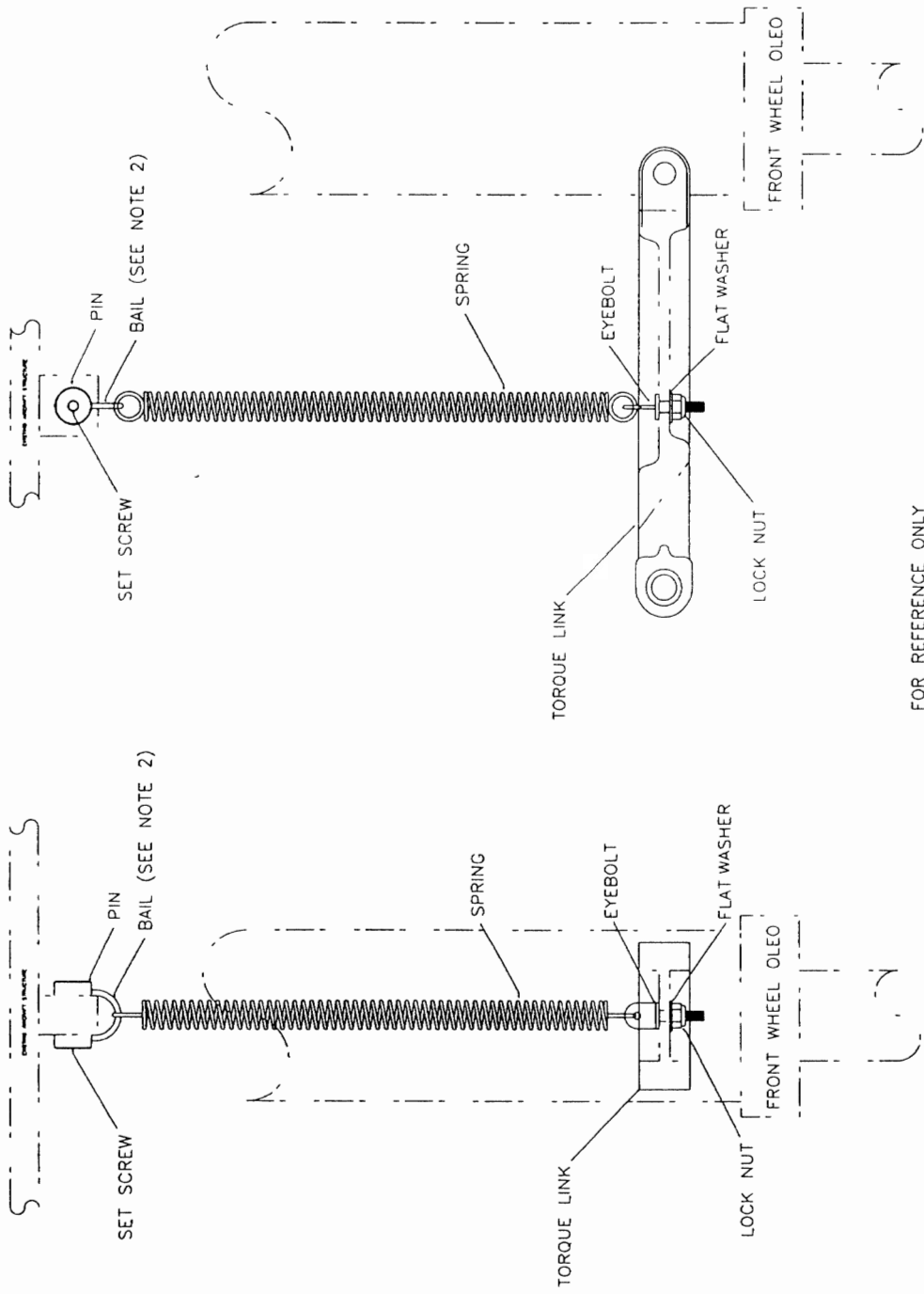


NOTES:

1. ALL DIMENSIONS IN INCHES. TOLERANCE +/- 0.050
2. DRILL AND DEBURR HOLE ON CENTRE LINE

| | | | | | | | | | | | | | | | | | | | | |
|--|---|-------------|-------------|-------|--------|-----|---|---------|--------|--------|-------|----|-------|------|------|--------|-------|--------|--|--|
| <p><small>This drawing is the property of Insight Instrument Corporation and is not to be reproduced or used in any way without the prior written permission of Insight Instrument Corporation. © Copyright 1993</small></p> | TORQUE LINK | | | | | | | | | | | | | | | | | | | |
| | Insight Instrument Corporation Box 122, Fort Erie, Ontario L2A 5M6 | | | | | | | | | | | | | | | | | | | |
| <table border="1"> <tr> <td>SIZE</td> <td>FILE NAME</td> <td>DRAWING NO.</td> <td>DATE</td> <td>DATE</td> <td>REV</td> </tr> <tr> <td>C</td> <td>LINKAGE</td> <td>012005</td> <td>012005</td> <td>07/71</td> <td>PP</td> </tr> <tr> <td>SCALE</td> <td>NONE</td> <td>DATE</td> <td>012001</td> <td>SHEET</td> <td>1 of 1</td> </tr> </table> | SIZE | FILE NAME | DRAWING NO. | DATE | DATE | REV | C | LINKAGE | 012005 | 012005 | 07/71 | PP | SCALE | NONE | DATE | 012001 | SHEET | 1 of 1 | | |
| SIZE | FILE NAME | DRAWING NO. | DATE | DATE | REV | | | | | | | | | | | | | | | |
| C | LINKAGE | 012005 | 012005 | 07/71 | PP | | | | | | | | | | | | | | | |
| SCALE | NONE | DATE | 012001 | SHEET | 1 of 1 | | | | | | | | | | | | | | | |

| | | | |
|-----|-------------|------|----------|
| REV | DESCRIPTION | DATE | APPROVED |
| | | | |



FOR REFERENCE ONLY
SEE NOTE 1

Insight

TORQUE KNEE MODIFICATION
ASSEMBLY DRAWING

Insight Instrument Corporation
Box 122, Fort Ent. Ontario L2A 5H6

Scale: 1:1
Drawing No: 010001
Date: 01/00
Rev: 1 of 1

NOTES:

1. REFER TO INSTALLATION PROCEDURES
2. ADD CORROSION INHIBITOR TO BAIL AND PIN WHERE THEY ARE JOINED