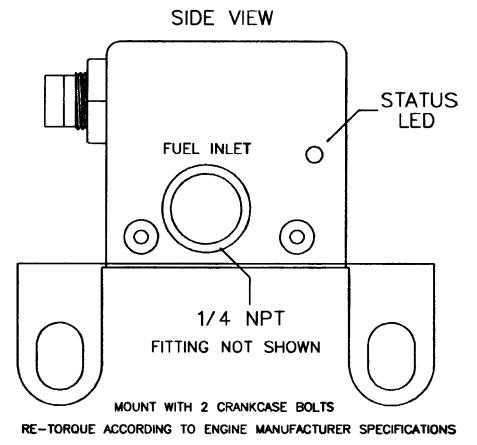
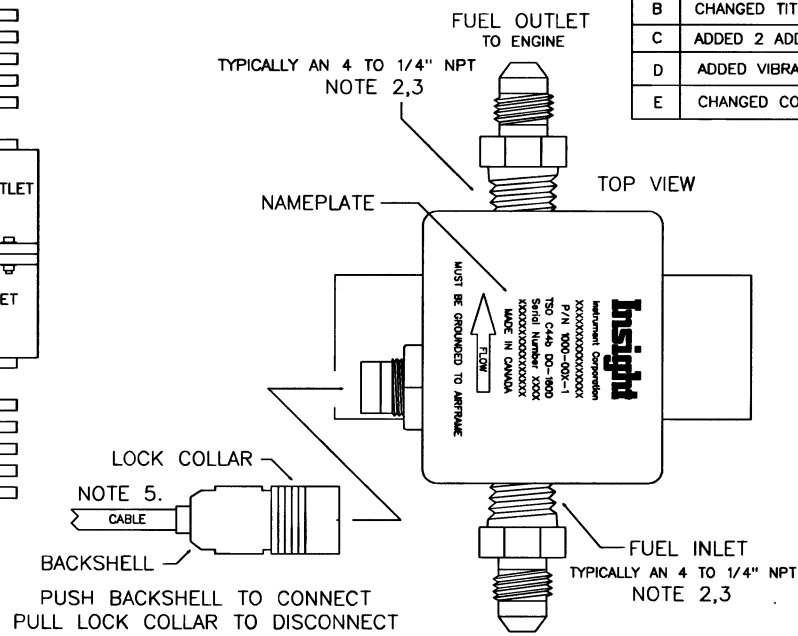
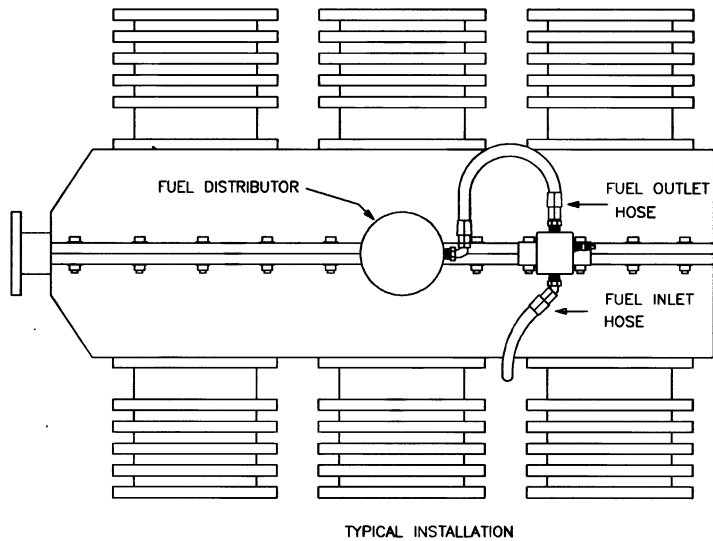


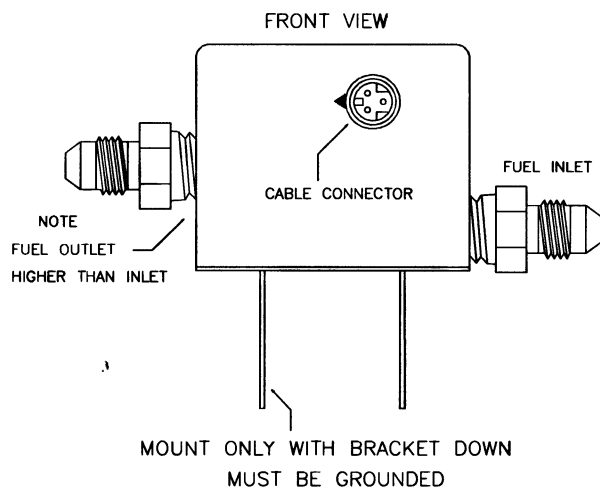
REVISIONS			
REV	DESCRIPTION	DATE	APPROVED
A	Added housing and bracket.	June 22/00	JWT
B	CHANGED TITLE	June 15/01	R.R.
C	ADDED 2 ADDITIONAL MOUNTING OPTIONS	MAY 26/03	R.R.
D	ADDED VIBRATION AND K-FACTOR OPTIONS	DEC 10/10	JY
E	CHANGED CONNECTOR.	NOV 30/12	JY



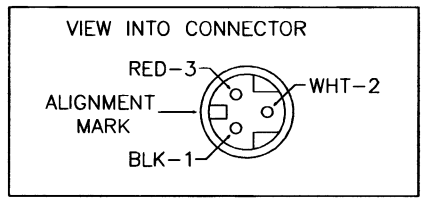
PART NUMBERS			
	INJECTOR	CARBURETOR	
FLOW SENSOR	1000-004-1(-Knnnnn)(-EPR)	1000-004-4(-Knnnnn)(-EPR)	
TRUE FLOW SENSOR	1000-006-1X SEE NOTE 12.	1000-006-4X	SEE NOTE 12.

NOTES:

1. Install INSIGHT FLOW SENSOR, one per engine, TWO per engine for pressure carburetor.
2. Use ONLY approved 1/4 NPT fittings for transducer inlet and outlet, installer supplied.
3. Use ONLY approved fuel line assemblies.
4. Use approved thread sealant. Torque pipe threads to a max of 15 ft. lbs. (180 in. lbs.)
5. INSIGHT supplied electrical harness with 3-pin connector, P/N 1000-809.
6. A straight length of fuel line upstream from the sensor inlet will improve accuracy by reducing turbulence in the rotor.
7. CONFIRM TRANSDUCER CASE IS GROUND TO AIRFRAME GROUND BEFORE POWERING UP.
8. Mount transducer with NAMEPLATE facing up.
9. Confirm all wiring PRIOR to powering up.
10. SEE INSTALLATION SCHEMATIC 1000-301 FOR FLOW SENSOR WIRING DETAILS.
11. SEE INSTALLATION SCHEMATIC 1000-816 FOR TRUE FLOW SENSOR WIRING DETAILS.
12. SPECIFY GPS MANUFACTURE AND MODEL WHEN ORDERING TRUE FLOW SENSOR, BENDIX KING B-FORMAT, APOLLO AND GARMIN Z-FORMAT.
13. FLOW SENSOR 30,000 PULSES PER GALLON UNLESS INDICATED BY -Knnnnn.
14. FLOW SENSOR DATA SIGNAL 5V UNLESS -EPR, EXTERNAL PULL-UP RESISTOR REQUIRED, SEE WIRING DIAGRAM.



PIN	FUNCTION	WIRE COLOUR
1	COMMON (DO NOT GROUND)	BLACK OR WHITE/BLUE
2	SIGNAL OUT	WHITE
3	10 TO 30 VDC INPUT	RED OR WHITE/ORANGE



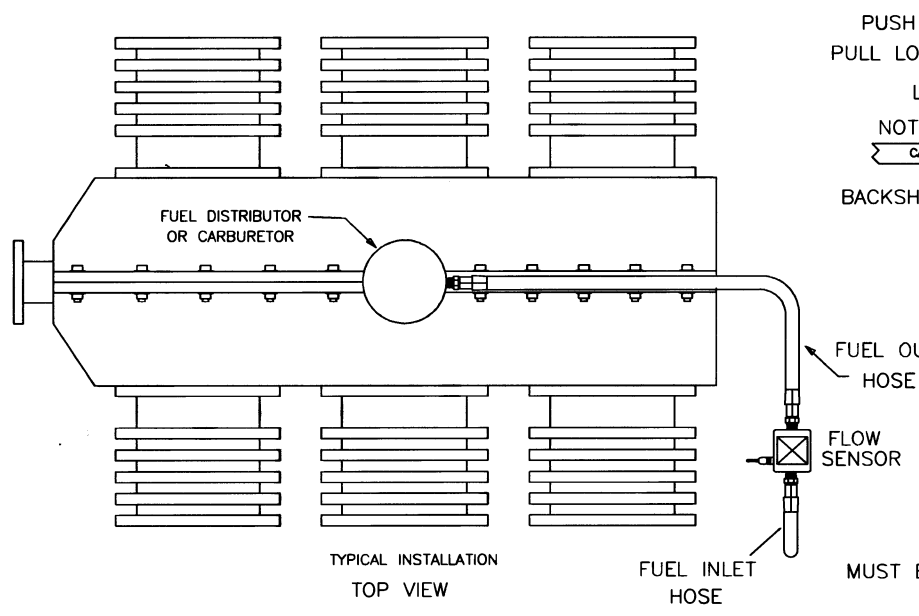
Insight

FLOW SENSOR AND TRUE FLOW SENSOR
MOUNTING DIAGRAM (BRACKET TYPE 1)

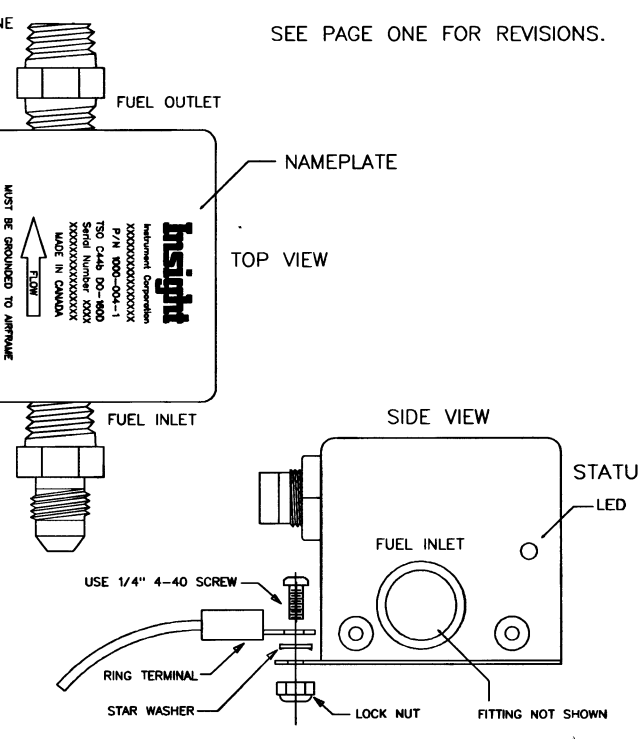
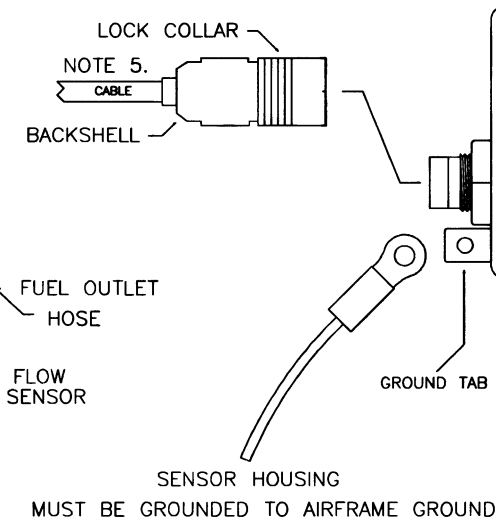
Insight Instrument Corporation
Box 122, Fort Erie, Ontario L2A 5M6

SIZE	FILE NAME: fmount1E	DRAWING NO. 1000-303	DRN	ICKD	OCED	REV
SCALE	DATE	June 1/99	SHEET	1 OF 3		E

This drawing is the property of Insight Instrument Corporation and contains confidential and proprietary information. Reproduction or unauthorized use is strictly forbidden.
© Copyright 1999



PUSH BACKSHELL TO CONNECT
PULL LOCK COLLAR TO DISCONNECT

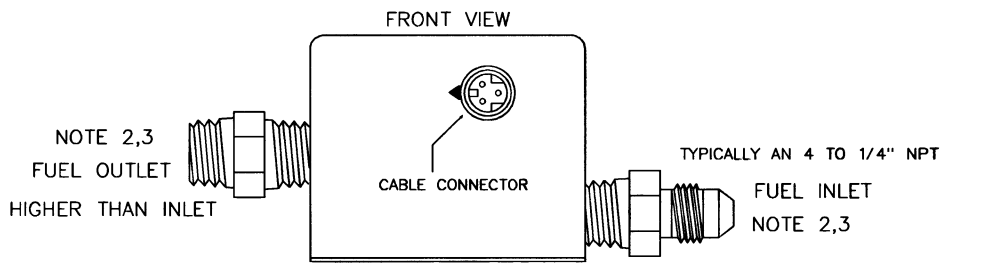


PART NUMBERS

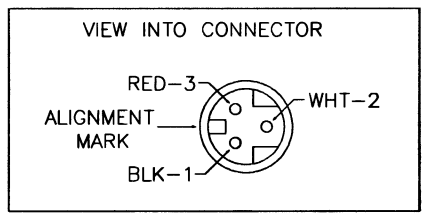
	INJECTOR	CARBURETOR
FLOW SENSOR	1000-004-3(-Knnnnn)(-EPR)	1000-004-6(-Knnnnn)(-EPR)
TRUE FLOW SENSOR	1000-006-3X SEE NOTE 12.	1000-006-6X SEE NOTE 12.

NOTES:

1. Install INSIGHT FLOW SENSOR, one per engine, TWO per engine for pressure carburetor.
2. Use ONLY approved 1/4 NPT fittings for transducer inlet and outlet, installer supplied.
3. Use ONLY approved fuel line assemblies.
4. Use approved thread sealant. Torque pipe threads to a max of 15 ft. lbs. (180 in. lbs.)
5. INSIGHT supplied electrical harness with 3-pin connector, P/N 1000-809.
6. A straight length of fuel line upstream from the sensor inlet will improve accuracy by reducing turbulence in the rotor.
7. CONFIRM TRANSDUCER CASE IS GROUNDED TO AIRFRAME GROUND BEFORE POWERING UP.
8. Mount transducer with NAMEPLATE facing up.
9. Confirm all wiring PRIOR to powering up.
10. SEE INSTALLATION SCHEMATIC 1000-301 FOR FLOW SENSOR WIRING DETAILS.
11. SEE INSTALLATION SCHEMATIC 1000-816 FOR TRUE FLOW SENSOR WIRING DETAILS.
12. SPECIFY GPS MANUFACTURE AND MODEL WHEN ORDERING TRUE FLOW SENSOR, BENDIX KING B-FORMAT, APOLLO AND GARMIN Z-FORMAT.
13. FLOW SENSOR 30,000 PULSES PER GALLON UNLESS INDICATED BY -Knnnnn.
14. FLOW SENSOR DATA SIGNAL 5V UNLESS -EPR, EXTERNAL PULL-UP RESISTOR REQUIRED, SEE WIRING DIAGRAM.
15. Transducer self supporting on fuel fittings.



PIN	FUNCTION	WIRE COLOUR
1	COMMON (DO NOT GROUND)	BLACK OR WHITE/BLUE
2	SIGNAL OUT	WHITE
3	10 TO 30 VDC INPUT	RED OR WHITE/ORANGE

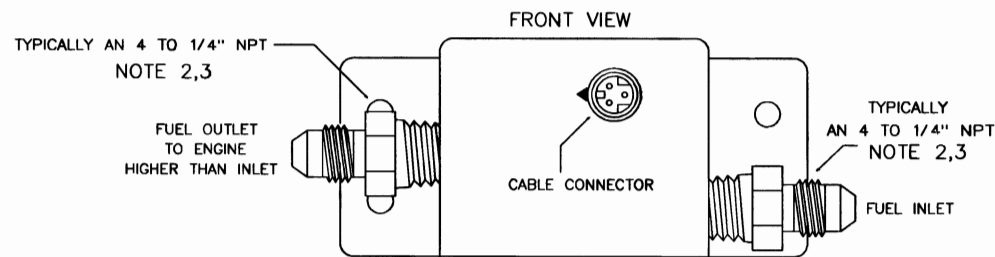
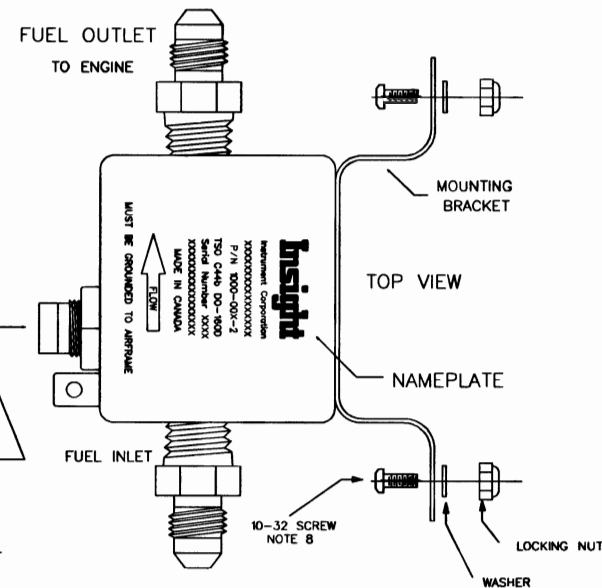
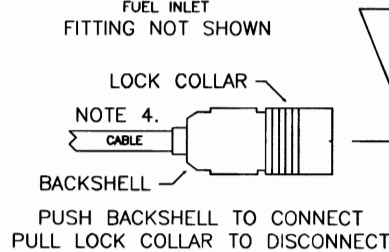
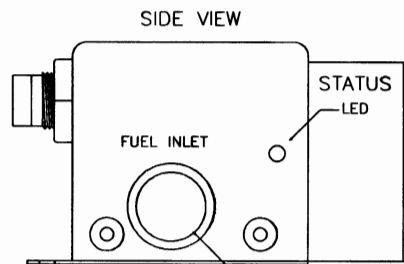
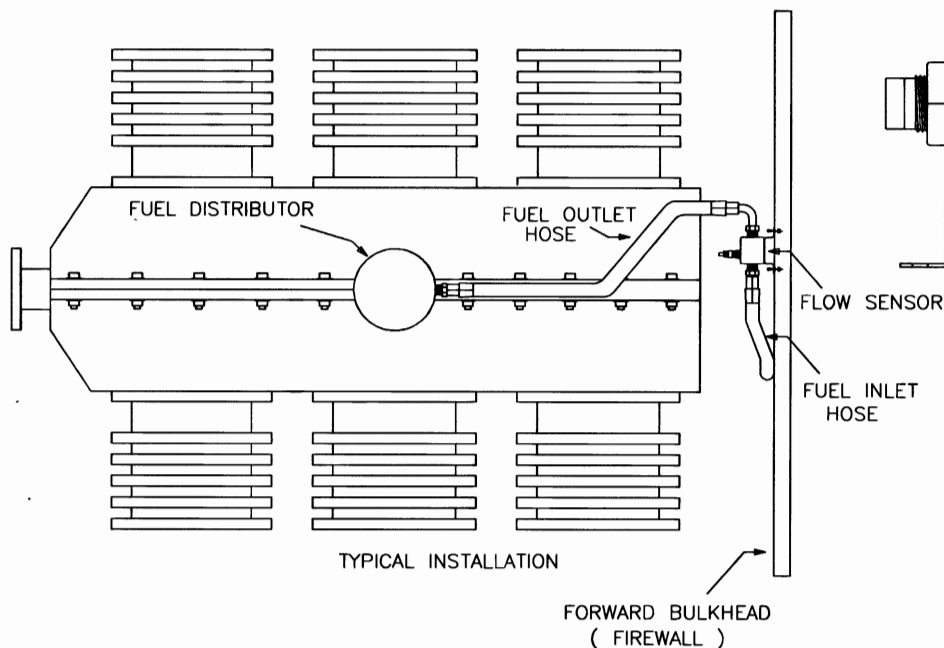


This drawing is the property of Insight Instrument Corporation and contains confidential and proprietary information. Reproduction or unauthorized use is strictly forbidden.
© Copyright 1999

FLOW SENSOR AND TRUE FLOW SENSOR MOUNTING DIAGRAM (BRACKET TYPE 3)

Insight Instrument Corporation
Box 122, Fort Erie, Ontario L2A 5M6

SIZE	FILE NAME:	DRAWING NO.	DRN	CRD	QC'D	REV
SCALE	DATE	SHEET				
none	June 1/99	3 OF 3				

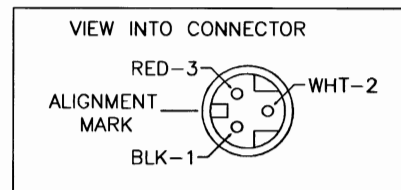


PART NUMBERS				
	INJECTOR		CARBURETOR	
FLOW SENSOR	1000-004-2(-Knnnnn)(-EPR)		1000-004-5(-Knnnnn)(-EPR)	
TRUE FLOW SENSOR	1000-006-2X	SEE NOTE 12.	1000-006-5X	SEE NOTE 12.

NOTES:

1. Install INSIGHT FLOW SENSOR, one per engine, TWO per engine for pressure carburetor.
2. Use ONLY approved 1/4 NPT fittings for transducer inlet and outlet, installer supplied. Use appropriate fittings to match airplane fuel lines.
3. Use approved thread sealant. Torque pipe threads to a max of 15 ft. lbs. (180 in. lbs.)
4. INSIGHT supplied electrical harness with 3-pin connector, P/N 1000-809.
5. A straight length of fuel line upstream from the sensor inlet will improve accuracy by reducing turbulence in the rotor.
6. Mount on firewall or airframe with NAMEPLATE facing up.
7. Installer may drill additional holes in bracket if necessary.
8. CONFIRM TRANSDUCER CASE IS GROUND TO AIRFRAME GROUND BEFORE POWERING UP.
9. Confirm all wiring PRIOR to powering up.
10. SEE INSTALLATION SCHEMATIC 1000-301 FOR FLOW SENSOR WIRING DETAILS.
11. SEE INSTALLATION SCHEMATIC 1000-816 FOR TRUE FLOW SENSOR WIRING DETAILS.
12. SPECIFY GPS MODEL WHEN ORDERING TRUE FLOW SENSOR, B = BENDIX KING, Z = APPOLLO AND GARMIN.
13. FLOW SENSOR 30,000 PULSES PER GALLON UNLESS INDICATED BY -Knnnnn.
14. FLOW SENSOR DATA SIGNAL 5V UNLESS -EPR, EXTERNAL PULL-UP RESISTOR REQUIRED, SEE WIRING DIAGRAM.

PIN	FUNCTION	WIRE COLOUR
1	COMMON (DO NOT GROUND)	BLACK OR WHITE/BLUE
2	SIGNAL OUT	WHITE
3	10 TO 30 VDC INPUT	RED OR WHITE/ORANGE



Insight

FLOW SENSOR AND TRUE FLOW SENSOR
MOUNTING DIAGRAM (BRACKET TYPE 2)

Insight Instrument Corporation
Box 122, Fort Erie, Ontario L2A 5M6

This drawing is the property of Insight Instrument Corporation and contains confidential and proprietary information. Reproduction or unauthorized use is strictly forbidden.
© Copyright 1999

SIZE	FILE NAME:	DRAWING NO.	DRN	CKD	QCD	REV
	fmount2E	1000-303				E
SCALE	DATE	SHEET				
none	June 1/99	2 OF 3				